

# CERTIFICATE OF LOCATION OF GOVERNMENT CORNER

West \_\_\_\_\_ Corner of Section 33, Township 108N, Range 43W, 5th P.M.

STATE OF MINNESOTA, County of Murray

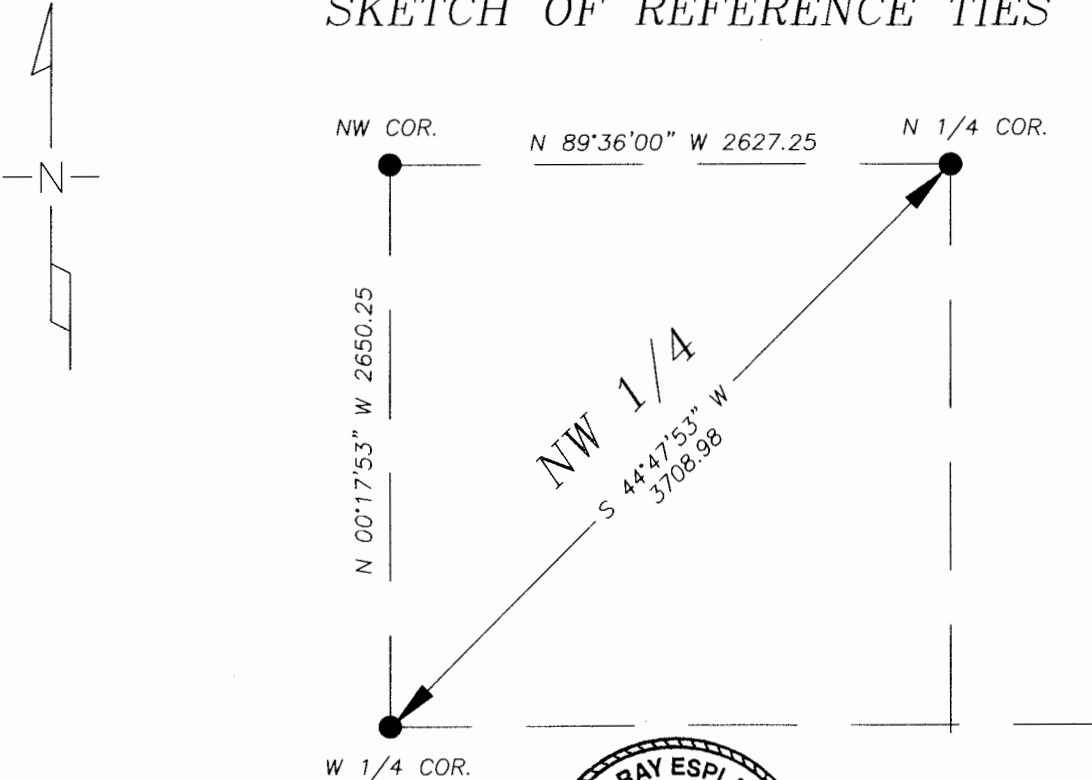
At the corner location shown on the sketch

On 11/08/05 found a 5/8" iron stake. Murray Co. Hwy. Dept. records indicated a steel pin was placed over concrete monument in 1969.

left monument as found       lowered monument,       removed monument (explain)

On \_\_\_\_\_ placed a \_\_\_\_\_

## SKETCH OF REFERENCE TIES



I hereby certify that this document and the data contained herein was prepared by me or under my direct supervision.

Dennis Ray Esplan      11/09/05  
SIGNATURE      DATE

MN. LICENSE NO. 43803

- Land Surveyor,       Professional Engineer  
 County Surveyor,       County Engineer

OFFICE OF THE COUNTY RECORDER

I hereby certify that this document was filed in the Co. Recorder's Office at \_\_\_\_\_ on the

\_\_\_\_\_ day of \_\_\_\_\_

County Recorder \_\_\_\_\_

By \_\_\_\_\_, Deputy

DOCUMENT NO. \_\_\_\_\_